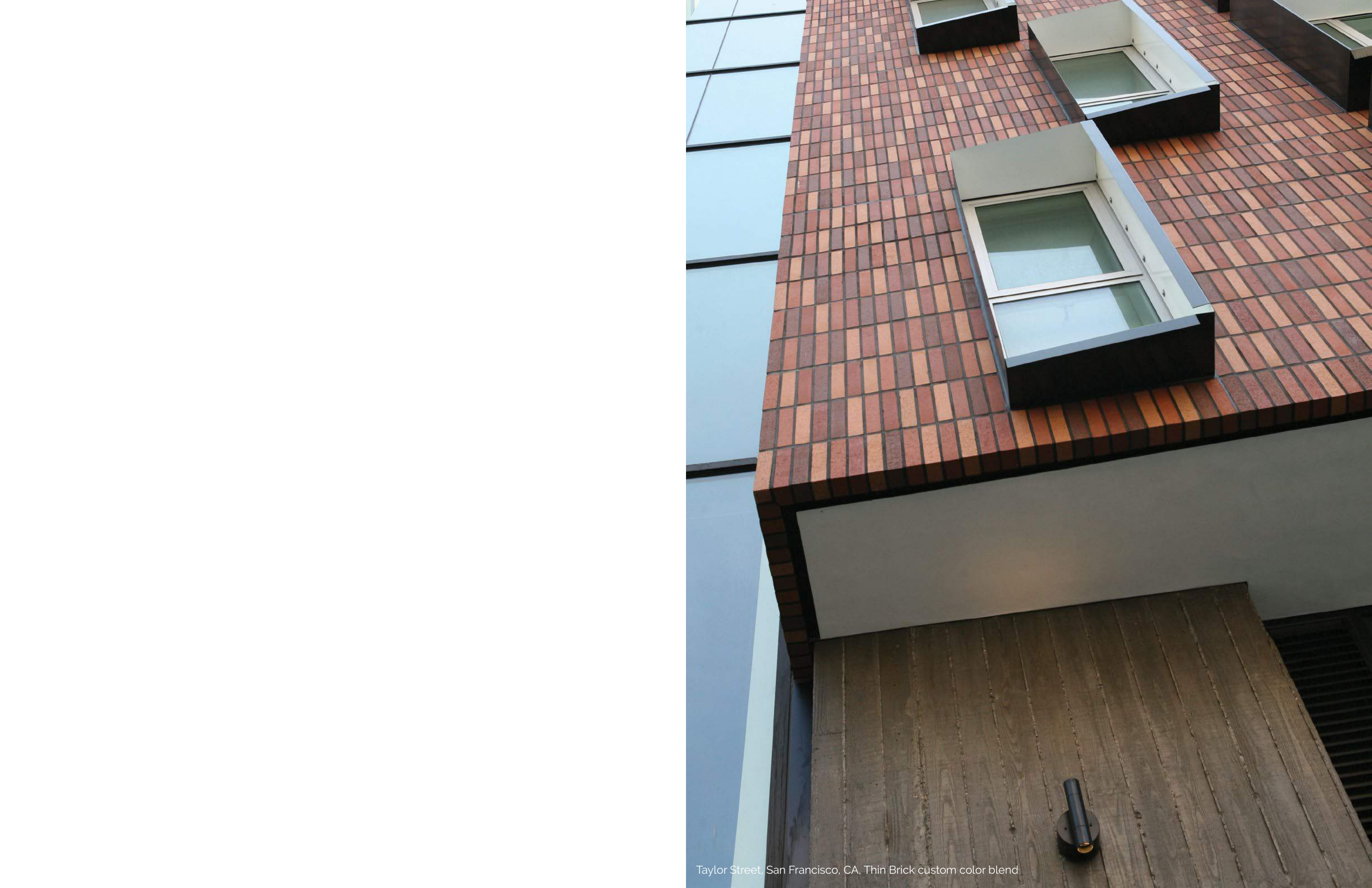




# THIN BRICK

 H.C. MUDDOX



Taylor Street, San Francisco, CA, Thin Brick custom color blend.

# LIGHTWEIGHT HEAVY IMPACT

You don't have to sacrifice your design vision because of construction constraints. H.C. Muddox Thin Brick is crafted to give you the design flexibility you need.



Reduce  
Wall Costs



Speed Up  
Installation



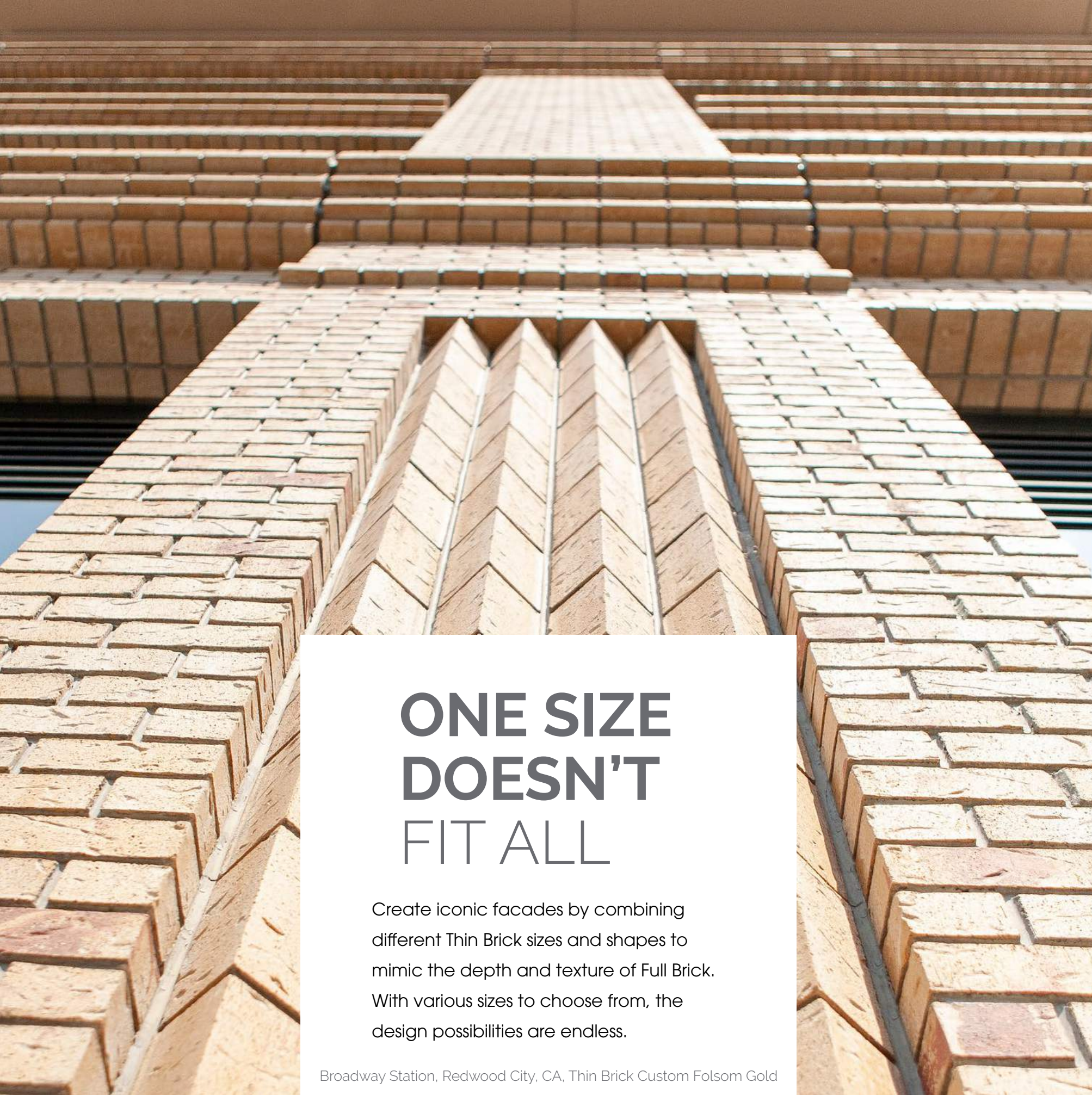
Visions  
Realized

Whatever size, shape, color, or textured Thin Brick you need, we have a solution or can create one so you can bring your vision to life.

More **Sizes**, More **Shapes**, More **Possibilities**



Taylor Street, San Francisco, CA, Thin Brick custom color blend



# ONE SIZE DOESN'T FIT ALL

Create iconic facades by combining different Thin Brick sizes and shapes to mimic the depth and texture of Full Brick. With various sizes to choose from, the design possibilities are endless.

Broadway Station, Redwood City, CA, Thin Brick Custom Folsom Gold



THIN BRICK	WIDTH	HEIGHT	LENGTH
Modular	1/2", 3/4"	2-1/4"	7-5/8"
Standard	1/2", 3/4"	2-1/2"	8"
Closure	1/2", 3/4"	3-5/8"	7-5/8"
2.5 Norman	1/2", 3/4"	2-1/2"	11-1/2"
3.5 Norman (Jumbo)	1/2", 3/4"	3-1/2"	11-1/2"
Craftsman	3/4"	2-1/4"	8"
California Roman	3-1/2", 1"	1-1/4"	11-1/2"
Lintel-Edge Caps	1/2", 3/4"	2-1/4", 2-1/2", 3-5/8", 3-1/2"	7-5/8", 8", 11-1/2"
Corners	1/2", 3/4"	1-1/4", 2-1/4", 2-1/2", 3-5/8", 3-1/2"	7-5/8", 8", 11-1/2"
Shapes	Custom (You dream it, we'll make it.)		

For all specification and color options go to [hcmuddox.com](http://hcmuddox.com)

# FIND YOUR PERFECT COLOR

Our color collection has over 100 color variations, so you have the design flexibility to create chromatic masterpieces or structures with a pop of color. See the next couple of pages for color inspiration.



Hercules Public Library, Hercules, CA, Thin Brick custom color blend

# COLOR DISCOVERY

Explore the full line of colors at [hcmuddox.com](http://hcmuddox.com)

Note: Clay bricks are made from natural raw materials. When fired, brick colors can vary in color from batch to batch. We recommend selecting colors from actual product samples. Contact your H.C. Muddox brick consultant or distributor for color samples.



Frosted Almond  
(Wire Cut)



Tule Fog  
(Wire Cut)



Spanish Moss  
(Wire Cut)



Bronze Ridge  
(Smooth)



Birch  
(Coated, Dry Tumbled)



Driftwood  
(Coated, Dry Tumbled)



California Poppy  
(Coated, Dry Tumbled)



Shasta  
(Coated, Dry Tumbled)



Sutter Gold  
(Wire Cut)



Summer Wheat  
(Wire Cut)



Dusty Rose  
(Wire Cut)



Mountain Rose  
(Wire Cut)



English Rose  
(Coated, Green Tumbled)

## COLOR MEETS TEXTURE

Increase visual weight with these new color and texture combinations. Contact your H.C. Muddox brick consultant or distributor for your color samples.



Coventry  
(Coated, Green Tumbled)



Old Town Red  
(Wire Cut)



Mission  
(Smooth)



Monterey Bay Flash  
(Smooth)



Burnt Rose  
(Wire Cut)



Mendocino  
(Flashed, Coated)



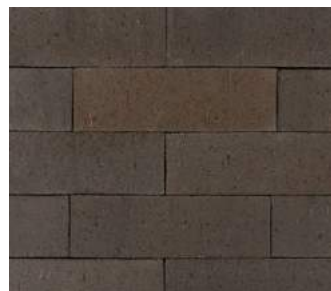
Yosemite  
(Coated, Dry Tumbled)



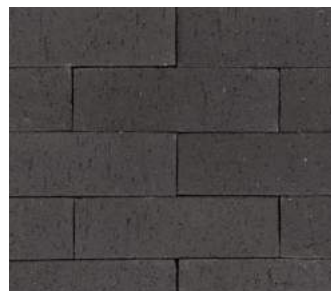
Iron Mountain  
(Smooth)



Carob  
(Wire Cut)



Sierra Slate  
(Wire Cut)



Ebony  
(Wire Cut)



Sequoia  
(Set Marks, Flashed, Dry Tumbled)



California Handmold  
(Flashed, Green Tumbled)



Redwood  
(Coated)



Volcano  
(Sanded, Dry Tumbled)



# EYE CATCHING TEXTURES

Find the right textured look for your next project. From effortless and smooth to crafted with character.

## 1. Wire Cut

Wires are used to create a slight drag and lightly pitted texture, highlighting the natural minerals in the clay.

## 2. Smooth

Clay is extruded through a steel die to create a smooth finish, giving the brick a sleek and modern look.

## 3. Dry Tumbled

After firing, the brick is tumbled, creating a weathered, rustic look with soft rounded edges.

## 4. Green Tumbled

Pre-firing, the brick is sent through a tumbler, creating dents and folds that give it an old-world appearance.

## 5. Coated

Powdered clays and other natural particles are compressed or sifted onto the clay. The same materials can be applied with a wet-based slurry before or after the firing process.

## 6. Sanded

Sand is rolled and compressed into the brick prior to firing, giving sanded brick a glass like or matte appearance.

## 7. Flashed

Before firing, the extruded brick is stacked (with or without placement to create set marks). During the firing process, an excess of natural gas is injected into the kiln. This results in colors on the exposed surfaces looking shiny, darker, or more vibrant.

Due to the manufacturing process, textures are available in select colors only. Contact your H.C Muddox brick consultant for more info.



Hamilton Street, Redwood City, CA, Thin Brick Old Town Red and Mountain Rose

# ARCHITECT RESOURCES

We have a variety of tools and services to help make your job easier.

Find the right tools for your next project at [hcmuddox.com](https://hcmuddox.com)



## Revit & BIM

With Revit and BIM you can save time and easily create specs using H.C. Muddox products.



## Installation Methods

See our website for Thin Brick installation options to find the best solution for your project.



## Learn & Earn Seminars

Our AIA Continuing Education seminars are an easy and efficient way for architects, engineers, interior designers, and LEED APs to gain their CE hours. Submit an AIA seminar request today!



## Masonry Designer

Incorporate H.C. Muddox into your wall designs, examine the impact of mortar color and other design elements, and export the results to your modeling programs or email.



## Sustainability

We manufacture brick products that can contribute to LEED points as determined by USGBC. Discover how H.C. Muddox brick can help achieve environmentally conscious sites and sustainable buildings.



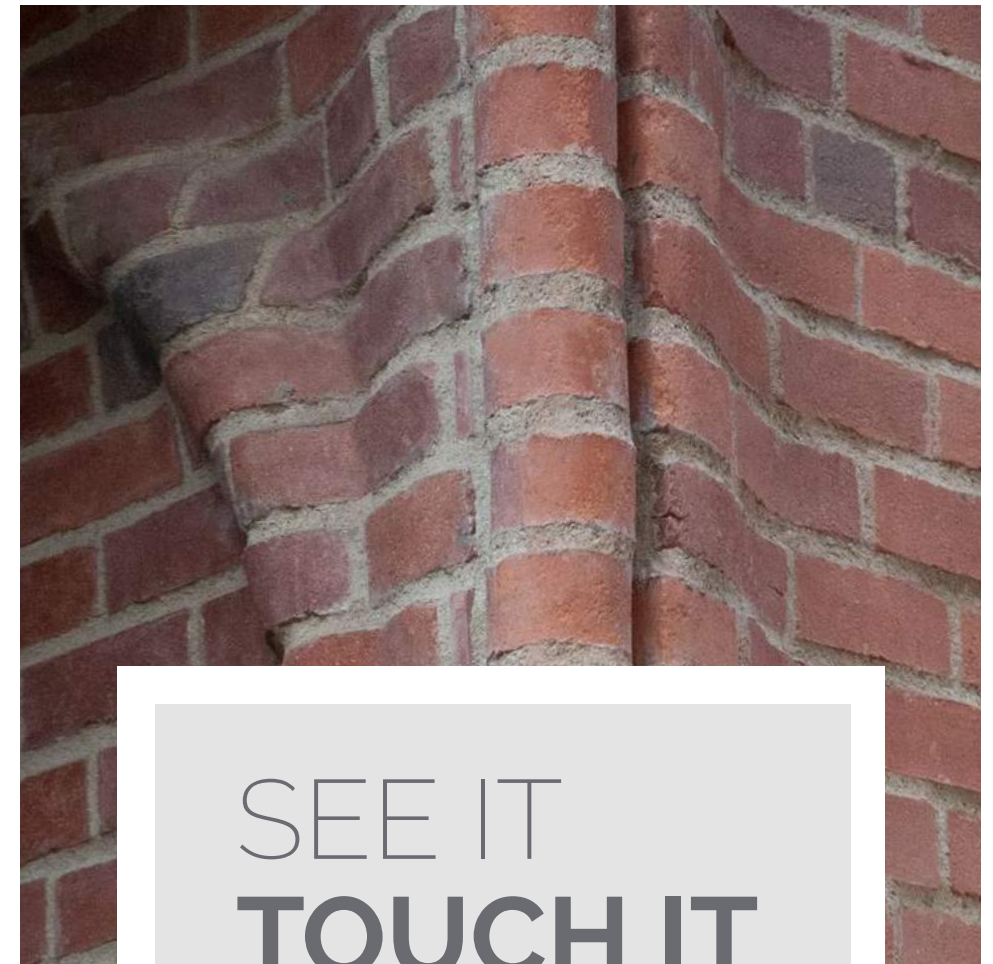
## Visions Realized

At H.C. Muddox we know that when you design projects you like to have your visions realized, not changed. We provide guidance during the design phases and offer customizable solutions so that the material selection you choose won't be substituted during construction.





Bryant Street, San Francisco, CA. Thin Brick and Custom Shaped Brick Old Sacramento and Railroad Blend Tumbled



# SEE IT TOUCH IT

We want you to see and feel the quality of our brick. Contact your H.C. Muddox brick consultant or distributor for samples. Or visit us online to find a team member near you. [hcmuddox.com](http://hcmuddox.com)





More **Sizes**, More **Shapes**, More **Possibilities**



**H.C. Muddox**

4875 Bradshaw Rd  
Sacramento, CA 95827  
(916) 859-6320

follow us



[hcmuddox.com](https://hcmuddox.com)

©2022 H.C. Muddox. All trademarks ® are registered trademarks. 8/01/22