

BRICK
VENEER
ON
STEEL
STUDS

A PROVEN
SYSTEM
BASED ON
RESEARCH
CONDUCTED
BY
WESTERN STATES
CLAY PRODUCTS
ASSOCIATION

STRUCTURAL INTEGRITY/DESIGN FLEXIBILITY

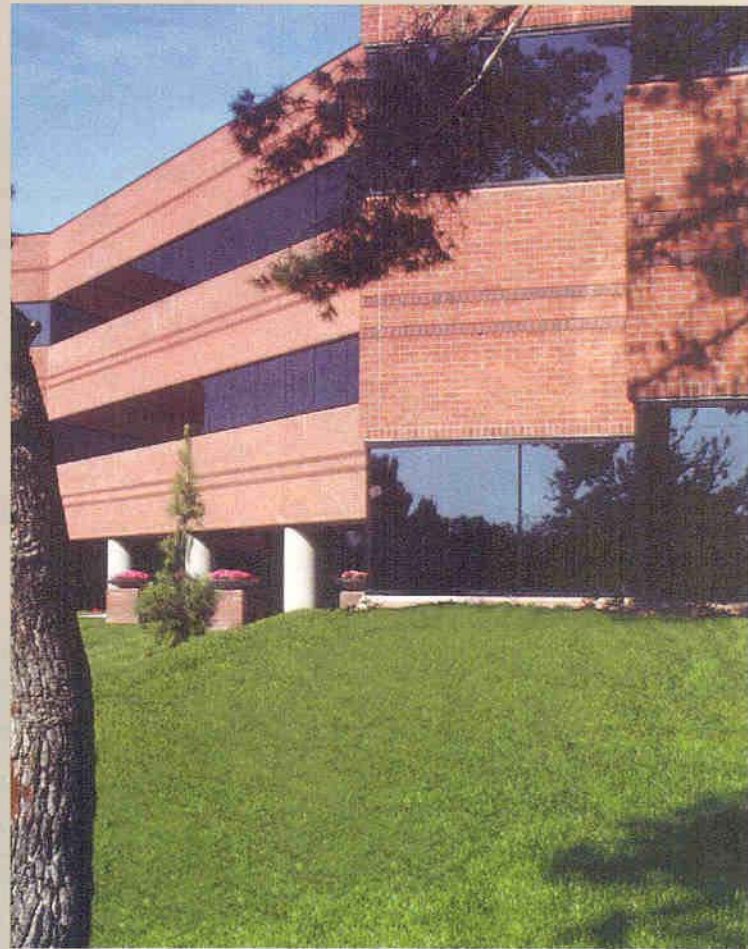


ANCHORED BRICK VENEER

Anchored brick veneer on steel studs has been utilized extensively in the last 10 years, particularly in the western part of the United States. There are several reasons for the popularity of this excellent exterior wall system:

- 1) Anchored brick veneer on steel studs is architecturally pleasing and flexible in terms of shapes, colors, patterns, geometry, etc..
- 2) Anchored brick veneer on steel studs is an economical way to achieve the beauty and durability of brick.
- 3) Anchored brick veneer permits the building to get into the "dry" quickly.

This system is an innovation of the conventional brick veneer over wood stud framing that has been used successfully on one and two story residential construction for many decades. Initially, this innovation was used without the



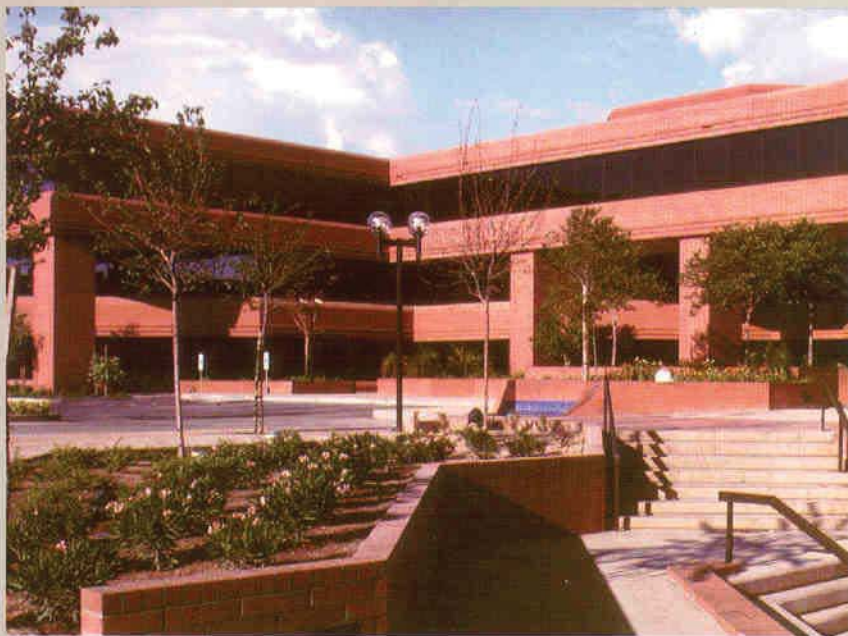
benefit of much study or understanding of the nature and behavior of the system and the interaction of the materials involved.

Recent research conducted by Western States Clay Products Association, in conjunction with research data generated by other organizations, has clearly indicated that a properly designed and detailed anchored veneer/steel stud system will satisfy all appropriate structural and environmental performance criteria. This research gives the specifier and designer of brick veneer/steel stud systems the confidence needed to take full advantage of the many benefits of this type of construction.



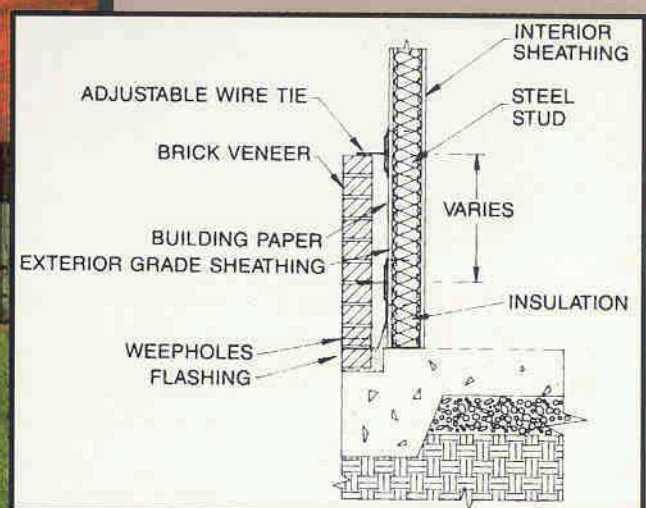
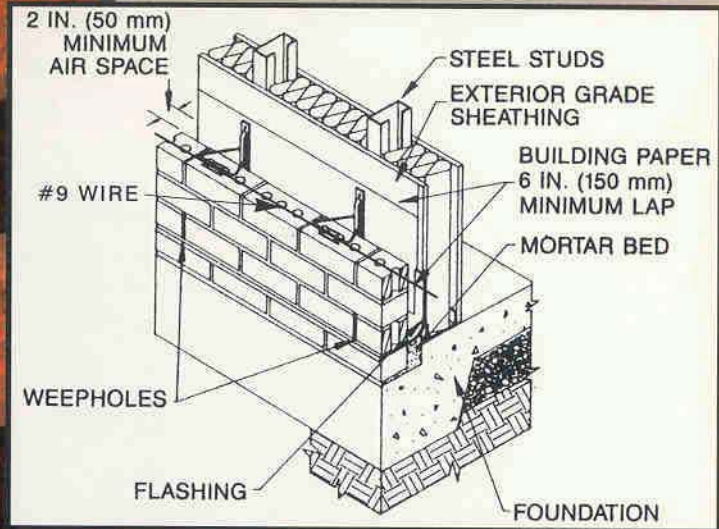
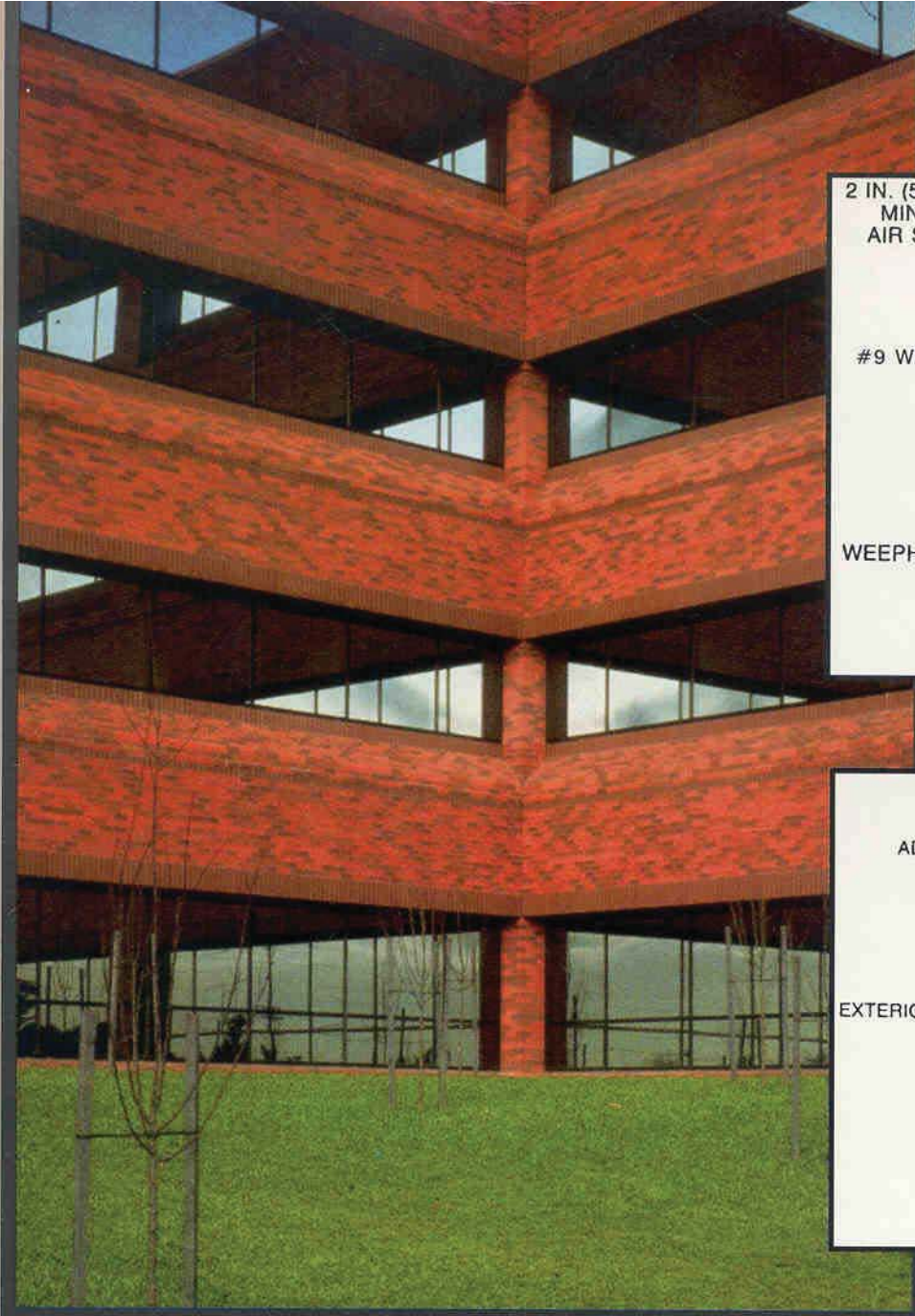
**THE TIMELESS
BEAUTY OF
BRICK
VENEER**

Western States Clay Products Association has gained a great deal of confidence in the performance of the anchored brick veneer/steel stud system as a result of the research program. This system combines construction economy, architectural design flexibility, and sound structural and environmental performance to the benefit of the Owner, Architect, Structural Engineer, and Contractor. As with any wall system, care must be taken to provide proper design, detailing, and construction practices to ensure adequate performance. The technology is at a point where a designer may specify materials which will provide appropriate performance characteristics.



Western States Clay Products Association endorses the use of properly designed and detailed anchored brick veneer/steel stud systems.

Additional information on the brick veneer/steel stud research project as well as technical information on other aspects of clay brick masonry is available through:



Details adapted from BIA Tech Note 28B.

**BRICK VENEER ON
STEEL STUDS . . .
THE PROVEN SYSTEM**

COMPLIMENTS OF:



WESTERN STATES CLAY PRODUCTS ASSOCIATION
 386 Beech Ave., #4, Torrance, CA 90501-6202
 Tel: 310/222-5743 Fax: 310/328-4320
www.wscpa.us